

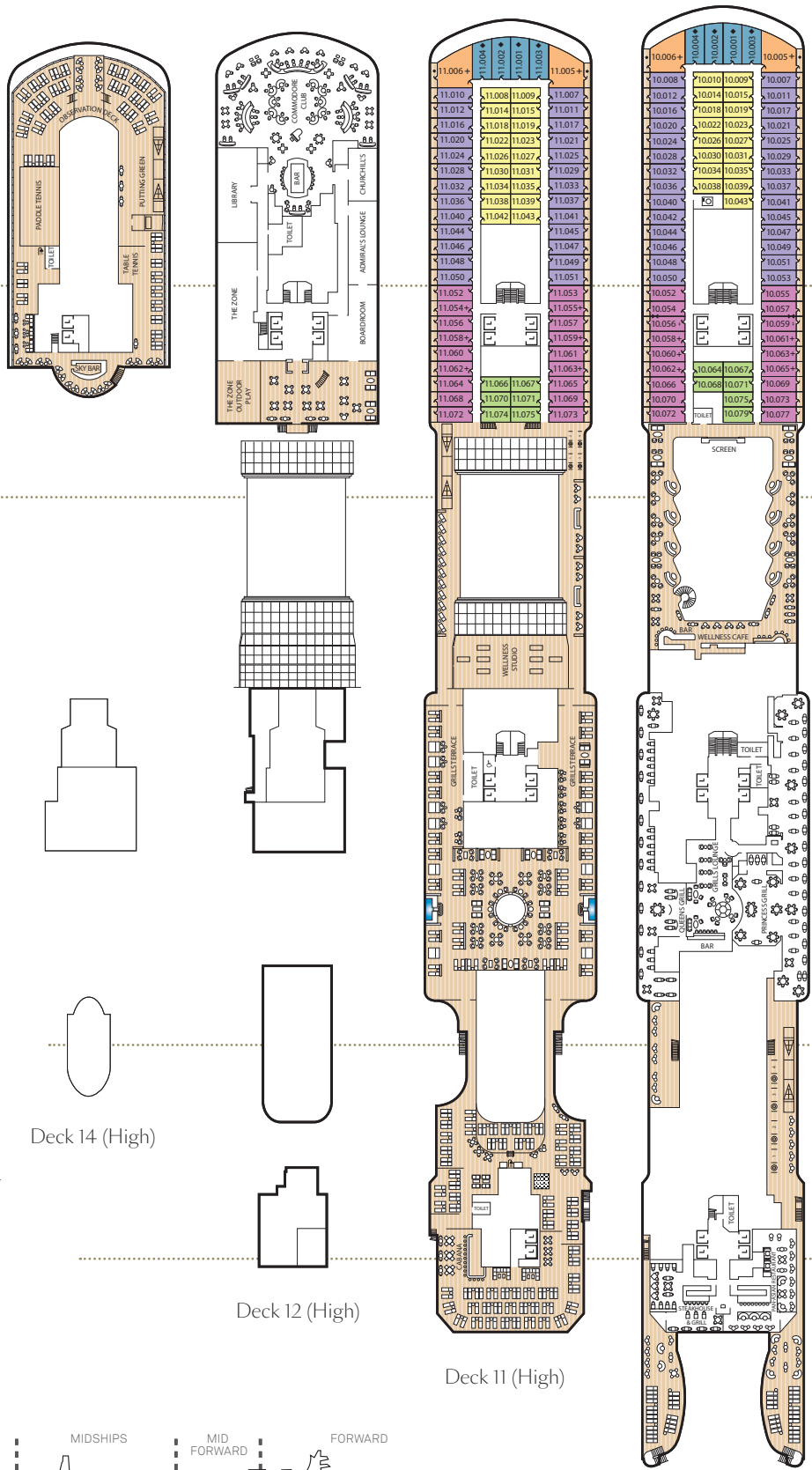
# Stateroom Category

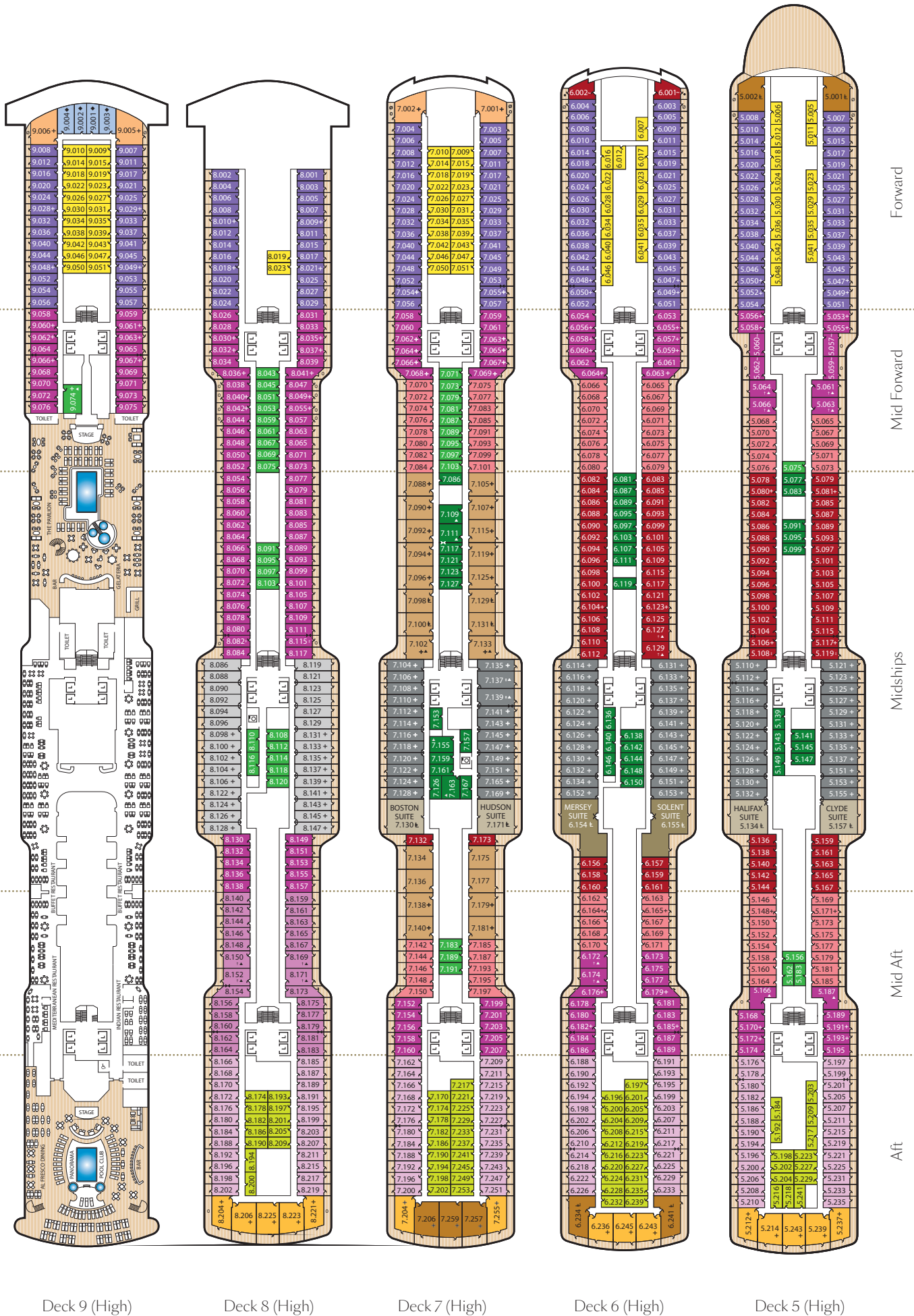
# Queen Anne deck plans.

<b>Grand Suites</b>		
Midships	High Deck 6	<b>Q1</b>
<b>Master Suite</b>		
Midships	High Decks 5,7	<b>Q2</b>
<b>Penthouse</b>		
Forward/Aft	High Decks 4,5,6,7	<b>Q3</b>
Midships	High Deck 7▲	<b>Q4</b>
<b>Queen Suites</b>		
Aft	High Decks 4,5,6,7,8	<b>Q5</b>
Forward	High Decks 7,9,10,11	<b>Q6</b>
<b>Princess Suites</b>		
Midships	High Decks 5,6,7▲	<b>P1</b>
Midships	High Decks 4,8	<b>P2</b>
<b>Club Balcony</b>		
Mid/Fwd	High Decks 5,6,7▲	<b>A1</b>
Midships	High Decks 5,6,7	<b>A2</b>
<b>Balcony</b>		
Midships	High Decks 5,6,7,8,9▲	<b>BB</b>
Midships	High Decks 4,8,10,11▲	<b>BC</b>
Aft	High Decks 5,6,7,8	<b>BD</b>
Aft/Forward	High Decks 4,5,6,7,8,9	<b>BE</b>
Forward	High Decks 4,10,11	<b>BF</b>
<b>Balcony (obstructed view)</b>		
Midships	High Deck 4▲	<b>DB</b>
Midships	High Deck 4▲	<b>DC</b>
<b>Deluxe Oceanview</b>		
Midships	Low Deck 1	<b>EA</b>
<b>Oceanview</b>		
Midships	Low Deck 1▲	<b>EB</b>
Midships	Low Deck 1	<b>EC</b>
Aft/Forward	Low Deck 1	<b>EE</b>
Forward	High Decks 4,10,11	<b>EF</b>
<b>Standard Inside</b>		
Midships	High Decks 5,6,7▲	<b>IA</b>
Midships	Low Deck 1, High Deck 9▲	<b>IB</b>
Midships	Low Deck 1, High Decks 4,10,11	<b>IC</b>
Aft	High Decks 5,6,7,8	<b>ID</b>
Aft/Forward	High Decks 4,5,6,7,8,9	<b>IE</b>
Forward	High Decks 4,10,11	<b>IF</b>

## Key to symbols

- L Lift
- † Indicates 2 lower berths and 1 upper berth
- + Indicates 3rd berth is a single sofabed
- ⊞ Indicates 3rd and 4th berth is a double sofabed
- ⊞ Indicates 3rd and 4th berth are a single sofabed and one upper bed
- ↔ Connecting staterooms
- Balcony is shaded by deck structure above
- ▲ Wheelchair accessible
- ~ Indicates alternative layout and configuration
- ◆ Staterooms have forward facing ocean views
- ⊙ Staterooms have partial metal fronted balconies
- Staterooms have metal fronted balconies





Deck 9 (High)

Deck 8 (High)

Deck 7 (High)

Deck 6 (High)

Deck 5 (High)

# Stateroom Category

## Grand Suites

Midships High Deck 6 **Q1**

## Master Suite

Midships High Decks 5,7 **Q2**

## Penthouse

Forward/Aft High Decks 4,5,6,7 **Q3**

Midships High Decks 7 **Q4**

## Queen Suites

Aft High Decks 4,5,6,7,8 **Q5**

Forward High Decks 7,9,10,11 **Q6**

## Princess Suites

Midships High Decks 5,6,7 **P1**

Midships High Decks 4,8 **P2**

## Club Balcony

Mid/Fwd High Decks 5,6,7 **A1**

Midships High Decks 5,6,7 **A2**

## Balcony

Midships High Decks 5,6,7,8,9 **BB**

Midships High Decks 4,8,10,11 **BC**

Aft High Decks 5,6,7,8 **BD**

Aft/Forward High Decks 4,5,6,7,8,9 **BE**

Forward High Decks 4,10,11 **BF**

## Balcony (obstructed view)

Midships High Deck 4 **DB**

Midships High Deck 4 **DC**

## Deluxe Oceanview

Midships Low Deck 1 **EA**

## Oceanview

Midships Low Deck 1 **EB**

Midships Low Deck 1 **EC**

Aft/Forward Low Deck 1, High Deck 9 **EE**

Forward High Decks 4,10,11 **EF**

## Standard Inside

Midships High Decks 5,6,7 **IA**

Midships Low Deck 1, High Deck 9 **IB**

Midships Low Deck 1, High Decks 4,10,11 **IC**

Aft High Decks 5,6,7,8 **ID**

Aft/Forward High Decks 4,5,6,7,8,9 **IE**

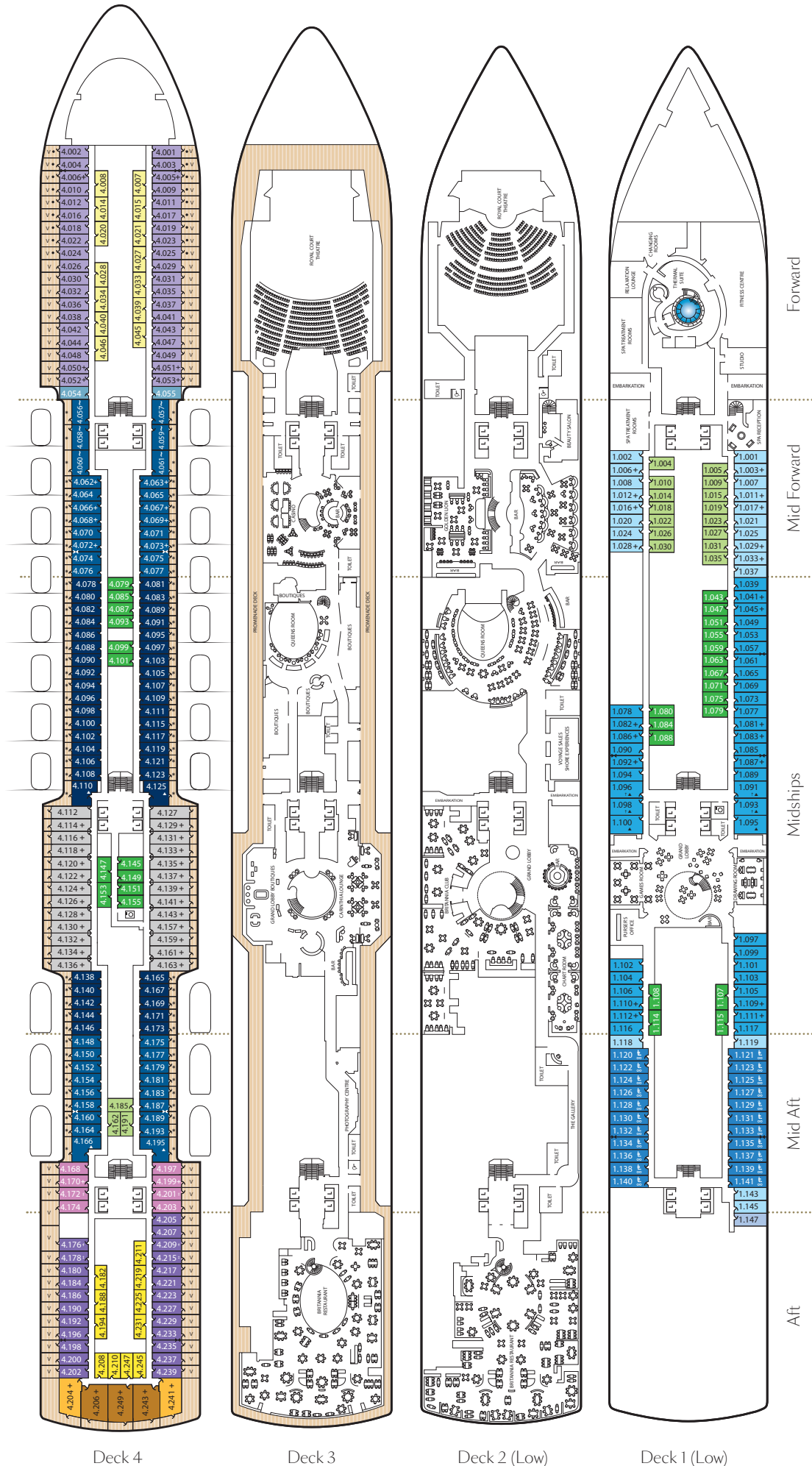
Forward High Decks 4,10,11 **IF**

## Key to symbols

- L Lift
- † Indicates 2 lower berths and 1 upper berth
- + Indicates 3rd berth is a single sofa bed
- ⊥ Indicates 3rd and 4th berth is a double sofa bed
- ‡ Indicates 3rd and 4th berth are a single sofa bed and one upper bed
- ↔ Connecting staterooms
- \* Staterooms have views obstructed by lifeboats and during Panama Canal transits lifeboats are adjacent to the balcony
- v Balcony visible from above
- ▲ Wheelchair accessible
- ~ Indicates alternative layout and configuration
- ∞ Staterooms have an additional shower room
- Staterooms have metal fronted balconies

## Ship facts - Queen Anne

Maiden Season:	2024
Speed:	22 knots
Guest Capacity:	2,996
No. of Crew:	1,225
Length Overall:	1,058 feet
Width:	116.8 feet
Draft:	27.2 feet



Deck 4

Deck 3

Deck 2 (Low)

Deck 1 (Low)